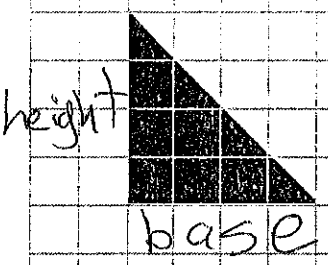
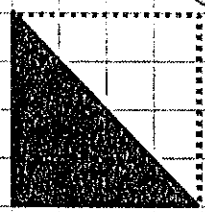


$4(4) = 16$   
Area of rectangle

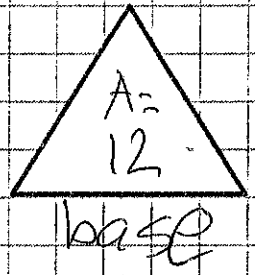
Area of triangle is HALF of Area of rectangle.



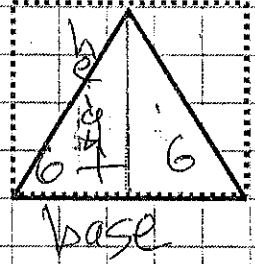
Area of rectangle  
 $\text{base}(\text{height})$



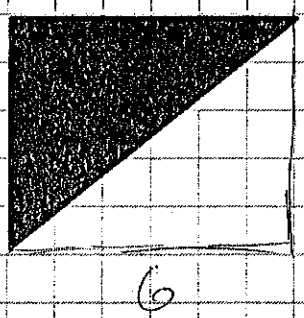
$16/2 = 8$  Area of Triangle



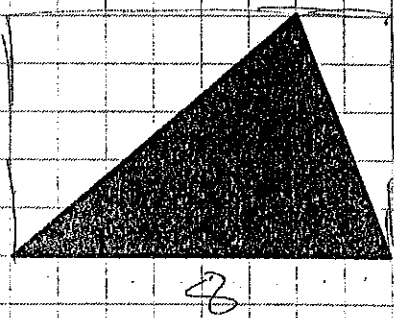
$3 \times 4 = 12$   
Area of rectangle



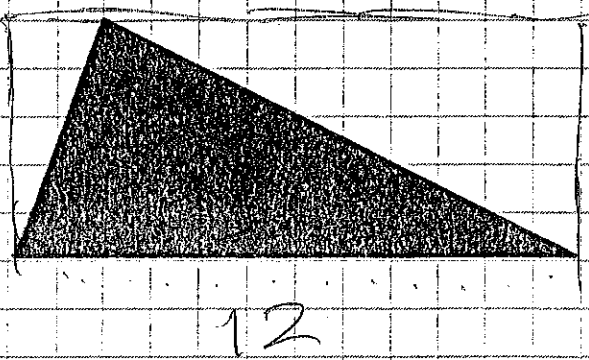
$12/2 = 6$  Area of triangle



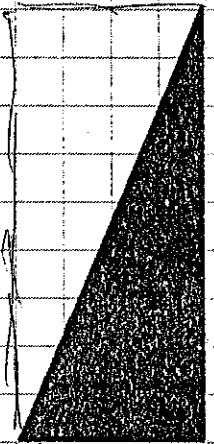
$6(5) = 30$   
 $A = 30/2 = 15$



$8(5) = 40$   
 $A = 40/2 = 20$



$12(5) = 60$   
 $A = 60/2 = 30$



$4(9) = 36$   
 $A = 36/2 = 18$